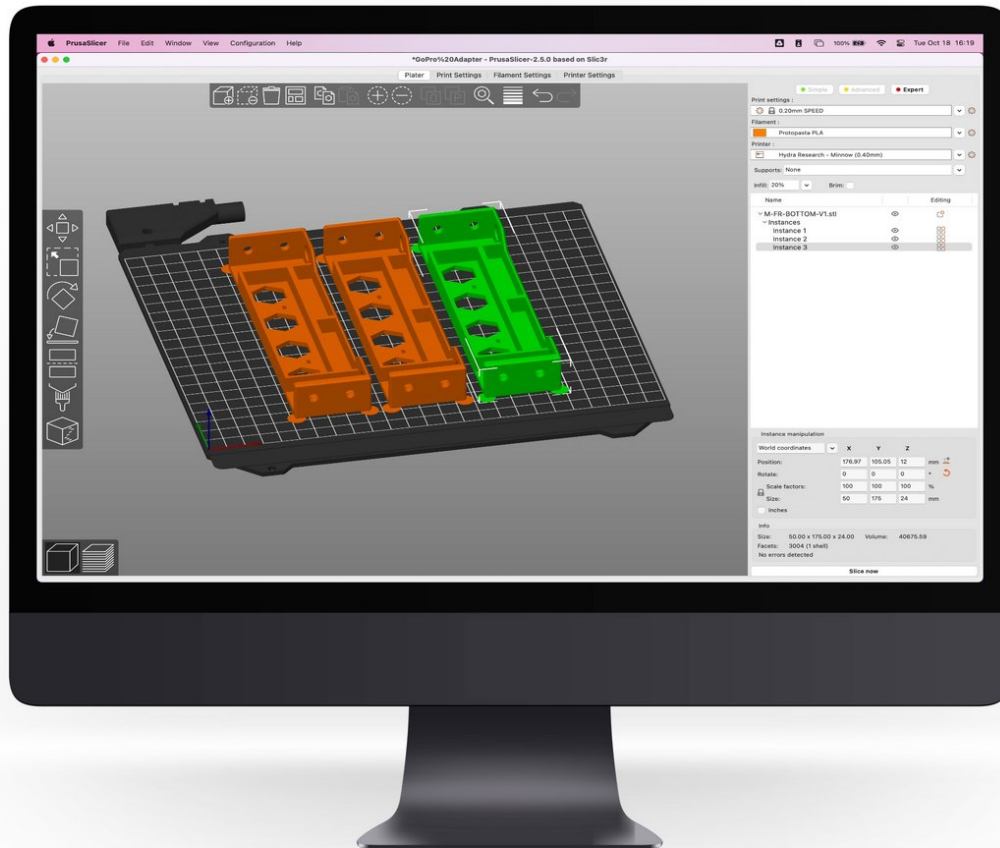
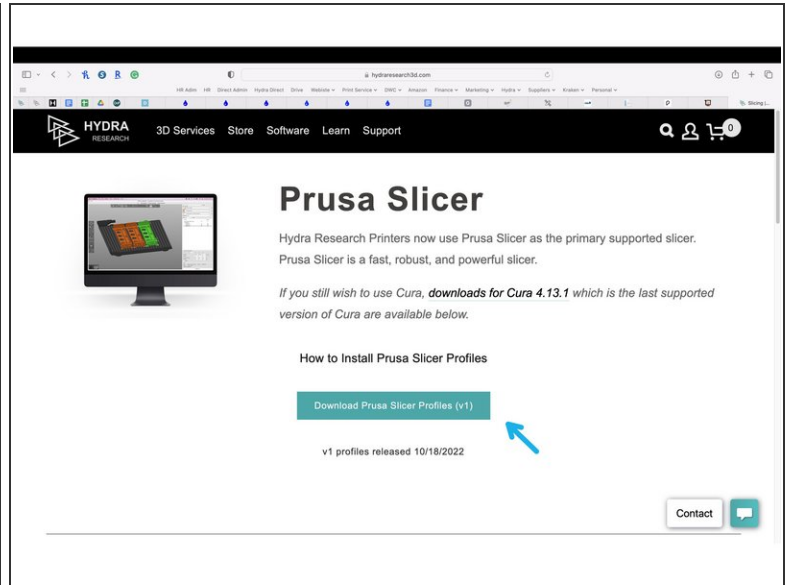
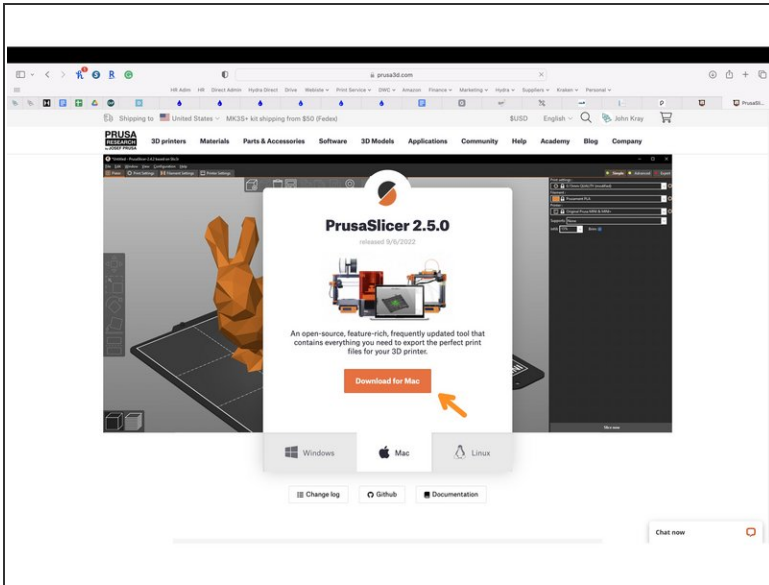


Hydra Research Prusa Slicer Setup

Written By: John Kray

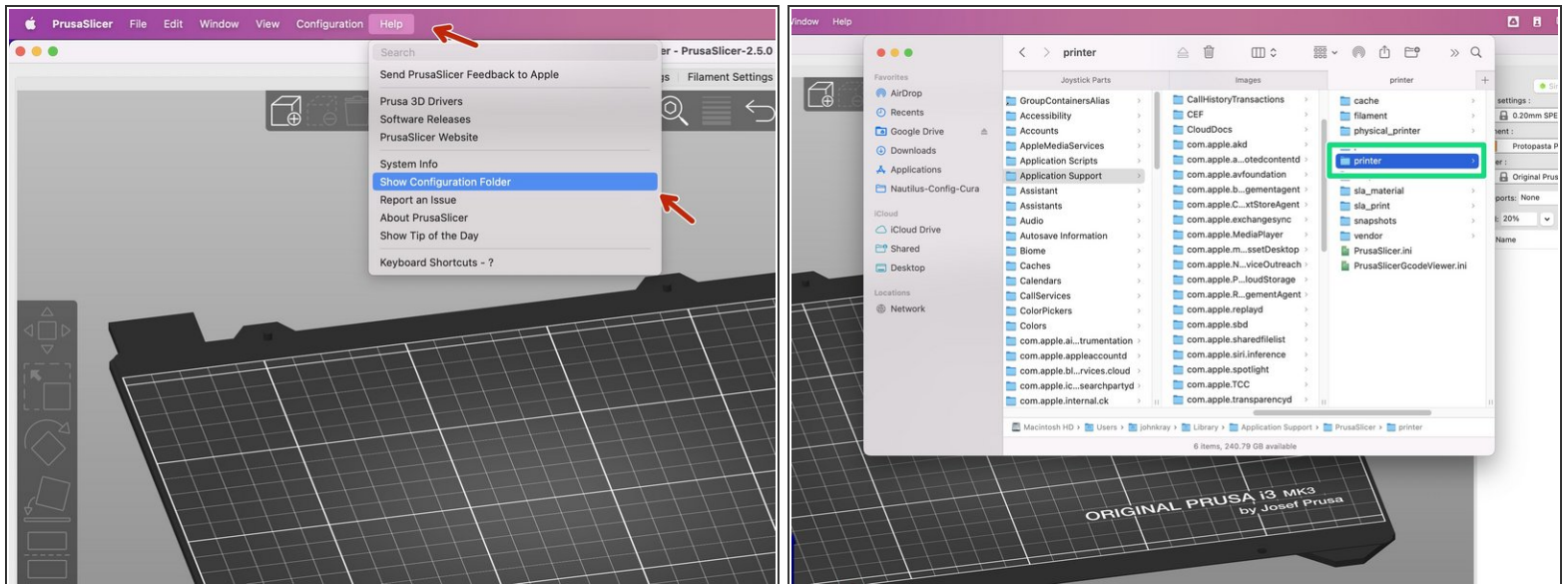


Step 1 — Downloads



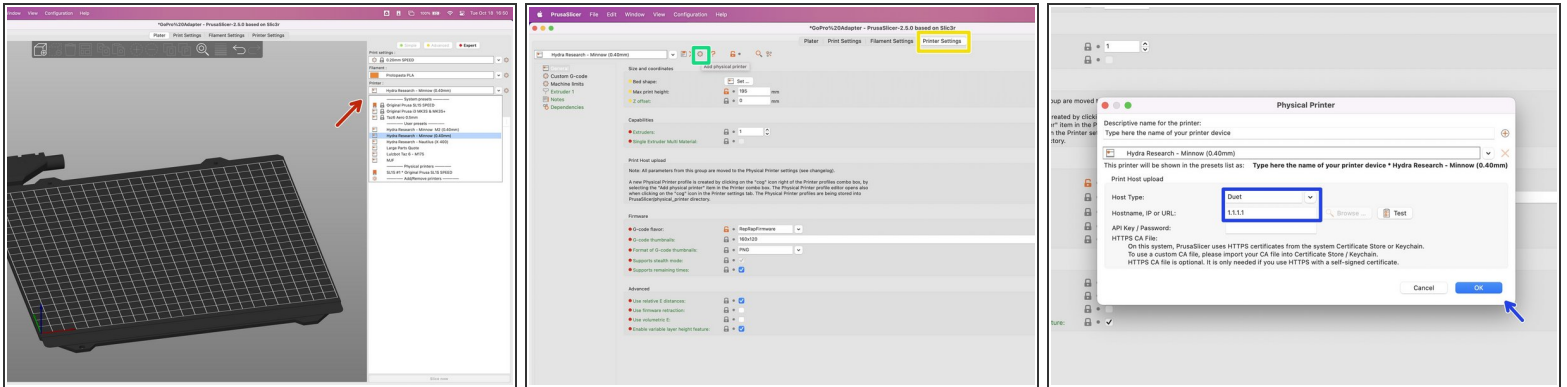
- Download and install [Prusa Slicer](#) if you do not already have it.
- Download Hydra Research Prusa Slicer Profiles [here](#).
- Unzip the Hydra Research Prusa Slicer Profiles Zip file.

Step 2 — Install Profiles



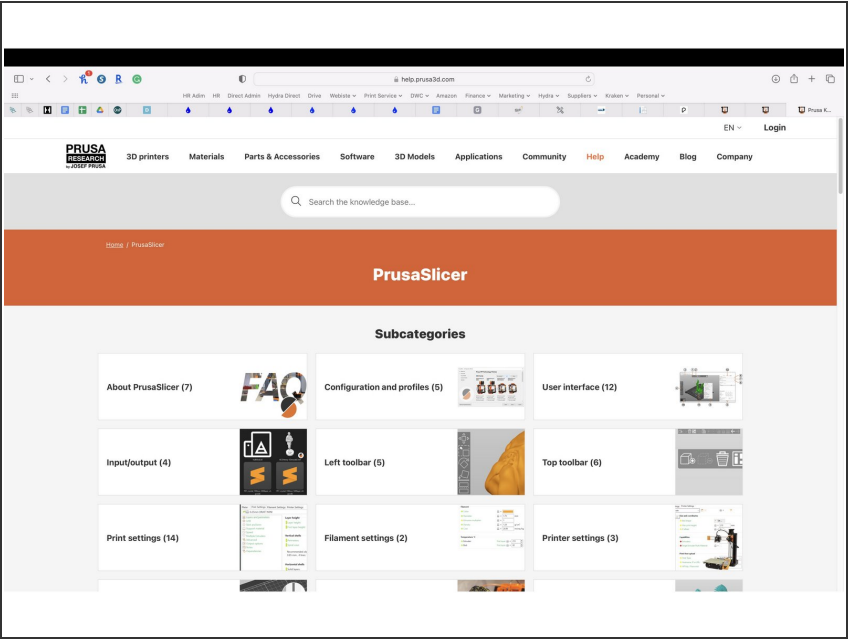
- Open Prusa Slicer
- From the header Help menu, select Show Configuration Folder.
- A popup file window will appear listing a number of folders/file. Open the printers file and copy the Hydra Printer Profiles you would like to use here.

Step 3 — Adding a Networked Printer



- Select the printer you want to add via network.
- Select the Printer Settings tab located in the center top of the Prusa Slicer window.
- Then click the little gear icon located to the right of the Printer name towards the top left of the Prusa Slicer window.
- In the Physical Printers popup select Duet from the Host Type dropdown menu. Next, enter your printer's IP address in the Hostname, IP or URL filed. Then click okay. You will now be able to select your physical printer and upload gcode jobs to it directly from Prusa Slicer over a network connection.

Step 4 — Learn How to Use Prusa Slicer



- You can learn more about Prusa Slicer and how to use it [here](#).